

*Segmental Retaining Walls*  
**Anchor Vertica Pro®**



**DAVASTONE**®

IMPROVING  
YOUR  
LANDSCAPE™

# Anchor Vertica Pro®

The largest member in the family of Pavestone wall products, the Anchor Vertica Pro® shares in the same benefits of constructability and design versatility. Utilizing an integral connector for system setback, Anchor Vertica Pro® stone is available in the straight or beveled face styles and in a wide variety of colors and blends.

## COMPOSITION AND MANUFACTURE

Anchor Vertica® is made from a "no slump" concrete mix. Made under extreme pressure and high frequency vibrations, Anchor Vertica® has a compressive strength greater than 3000psi, a water absorption maximum of 7%.

## INSTALLATION

- Layout:** Stake out the wall's placement according to lines and grades on approved plans. Excavate for the leveling pad to the lines and grades shown. Excavate soil to a dimension behind the wall for placement of grid and reinforced soils. The trench for the leveling pad should be a minimum six inches in front and back of the placed wall unit.
- Leveling Pad:** The leveling pad consists of a crushed aggregate compactible base material with a three quarter (3/4) inch maximum top size aggregate, minus the fines. The pad must extend a minimum six (6) inches in front and behind the first course of block and be a minimum six (6) inches in depth. Compact the aggregate in maximum eight (8) inch lifts and check top elevation for level.
- Base Course:** Place a string line along the back of the block to align the wall units. Begin laying block at the lowest elevation of the wall. Place wall units flat on the leveling pad with block facings aligned according to plans. If necessary remove rear lip of the block so that it will lie flat on the leveling pad. Place the blocks side by side, flush against each other and in full contact with the leveling pad. Level the unit front-to-back and side-to-side. Check the blocks for proper horizontal and vertical alignment.
- Wall Construction:** Clean any debris off the top of the blocks. Place the second course of blocks on the base course maintaining a running bond pattern (do not align vertical joints). Push or pull each block forward as far as possible to ensure unit to unit engagement and the correct setback. Fill all voids between and within concrete wall units with drainage aggregate. Backfill with drainage aggregate directly behind the block. Fill behind the aggregate with soil meeting design parameters. Place and compact the backfill material before the next course is laid. Hand-operated equipment should be used within 4 feet of the wall. Avoid driving heavy equipment within the same area.
- Drainage:** Fill in the area behind the blocks with drainage aggregate to a minimum horizontal dimension of 12 inches. Place a perforated drain pipe at the base of the drainage aggregate and above the wall's front finished grade at the toe. Daylight or direct the drain to an area lower than the lowest drain elevation in the wall. Additional drainage may be required.
- Compaction:** Place the backfill soil behind the drainage aggregate and compact backfill within four (4) feet of the wall with a hand-operated compactor. Aggregate is to be level with or slightly below the top of each course. Add soil and compact backfill soil as necessary. Testing for density may be required.
- Geo-Grid Reinforcement Placement:** Check approved wall construction plan for grid placement. Determine which courses will have reinforcement grid placed into the backfill. Measure and cut the reinforcement grid to the design length on the plans. The reinforcement grid has a design strength direction to be laid perpendicular to the wall. Place the front edge of the grid on the designated top course to one and one half (1 1/2) inches maximum from the face of the block. Apply the next course of blocks to secure it in place. At the back of the wall, pull the reinforcement taut. Add drainage aggregate behind the blocks, then add the backfill soil and compact. Testing for proper density and compaction may be necessary to meet project requirements. A minimum of six (6) inches of backfill over the grid is required prior to operating most vehicles on top of the reinforcement.
- Finish Grade and Surface Drainage:** Protect your wall from water damage and erosion with a finished grade to provide positive drainage away from the top and bottom of the wall structure. To minimize infiltration of water into the top of the backfill area of the wall, place a minimum six (6) inches of soil with low permeability (clay or similar materials).

**Note:** Colors are shown as accurately as possible in brochures & samples, but due to the nature of the product, regional color differences and variables in print reproduction, colors may not match exactly.

## APPLICATIONS

Landscape Retaining Walls • Geosynthetic Reinforced Tall Walls • Erosion Control • Water Projects • Channel Projection

## PRODUCT INFORMATION

Anchor Vertica Pro® is available with a straight or beveled face. Quantity/sq. ft. approximately 1 stone.



### Anchor Vertica Pro® Straight

Nominal Dimensions	18 1/4 L x 20 W x 8" H*
Wt./Stone	109 lbs.
Stones/Pallet	20
Approx. Wt./Pallet	2,380 lbs.
Face ft./Pallet	21
Batter	4°
Product Number	860

### Anchor Vertica Pro® Beveled

Nominal Dimensions	18 L x 20 W x 8" H*
Wt./Stone	115 lbs.
Stones/Pallet	20
Approx. Wt./Pallet	2,300 lbs.
Face ft./Pallet	20
Batter	4°
Product Number	861

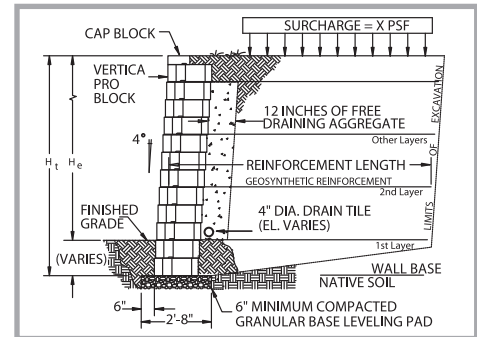


### Anchor Wall Cap #864\*\* Nominal Dimensions

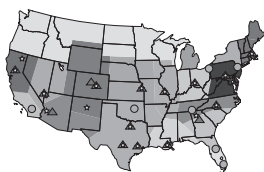
Nominal Dimensions	17 1/4 L x 10 W x 4" H*
Wt./Stone	40 lbs.
Stones/Pallet	72
Approx. Wt./Pallet	2,880 lbs.
Linear ft./Pallet	87.8
Product Number	864

\* Fractional dimensions are nominal

\*\* Caps not available in all markets



Complete installation & specification details are available by contacting your Pavestone Sales Representative.



**PAVESTONE**  
Improving Your Landscape™  
[www.pavestone.com](http://www.pavestone.com)

- Atlanta, GA: (770) 306-9691
- Austin/San Antonio, TX: (512) 558-7283
- Boston, MA: (508) 947-6001
- Cartersville, GA: (770) 607-3345
- Charlotte, NC: (704) 588-4747
- Cincinnati, OH: (513) 474-3783
- Colorado Springs, CO: (719) 322-0101
- Dallas/Ft. Worth, TX: (817) 481-5802
- Denver, CO: (303) 287-3700
- Hagerstown, MD: (240) 420-3780

- Houston, TX: (281) 391-7283
- Kansas City, MO: (816) 524-9900
- Las Vegas, NV: (702) 221-2700
- New Orleans, LA: (985) 882-9111
- Phoenix, AZ: (602) 257-4588
- Sacramento/Winters, CA: (530) 795-4400
- St. Louis/Cape Girardeau, MO: (573) 332-8312

